



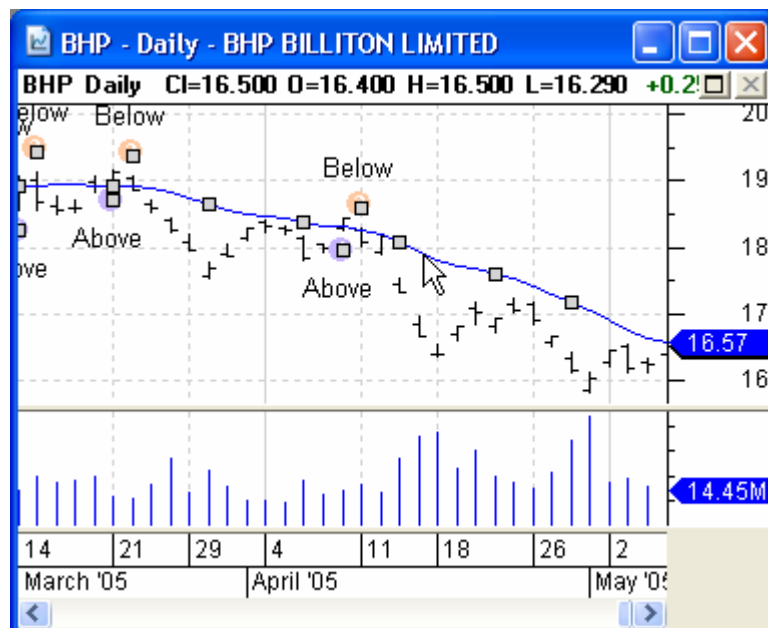
Hiding Signal Markers for Indicators

Hiding markers

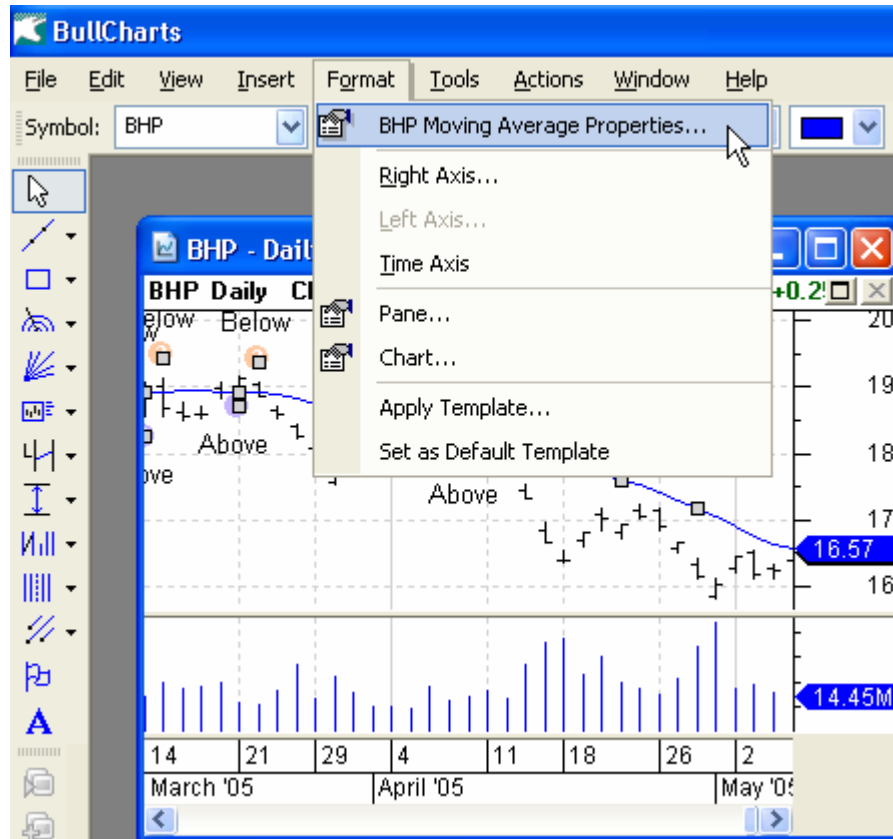
Select the particular indicator that you wish to modify. Move the mouse cursor to above the indicator line and click once with the left-hand button of the mouse.



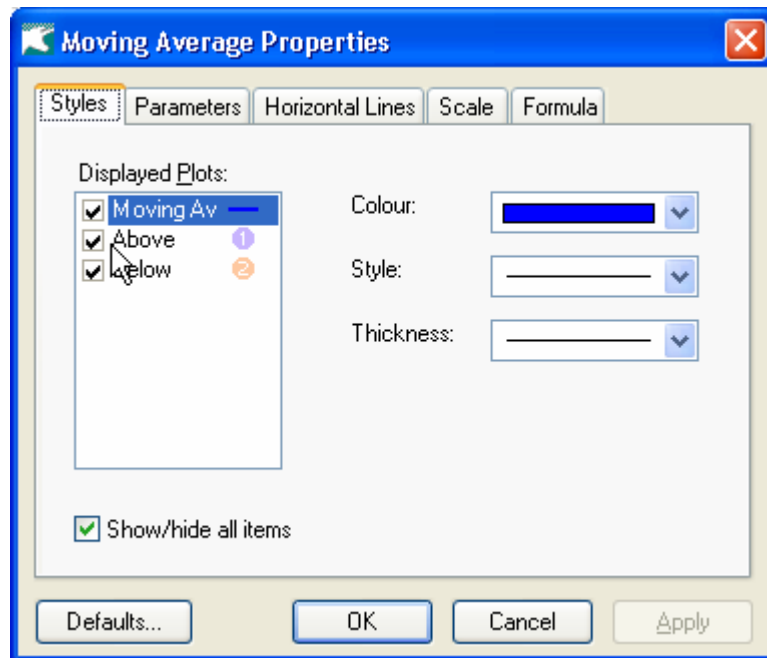
Once selected, the indicator will now have a series of small grey squares along the indicator line to confirm that you have correctly selected the line.



Next, select Properties of the indicator from the Format menu.

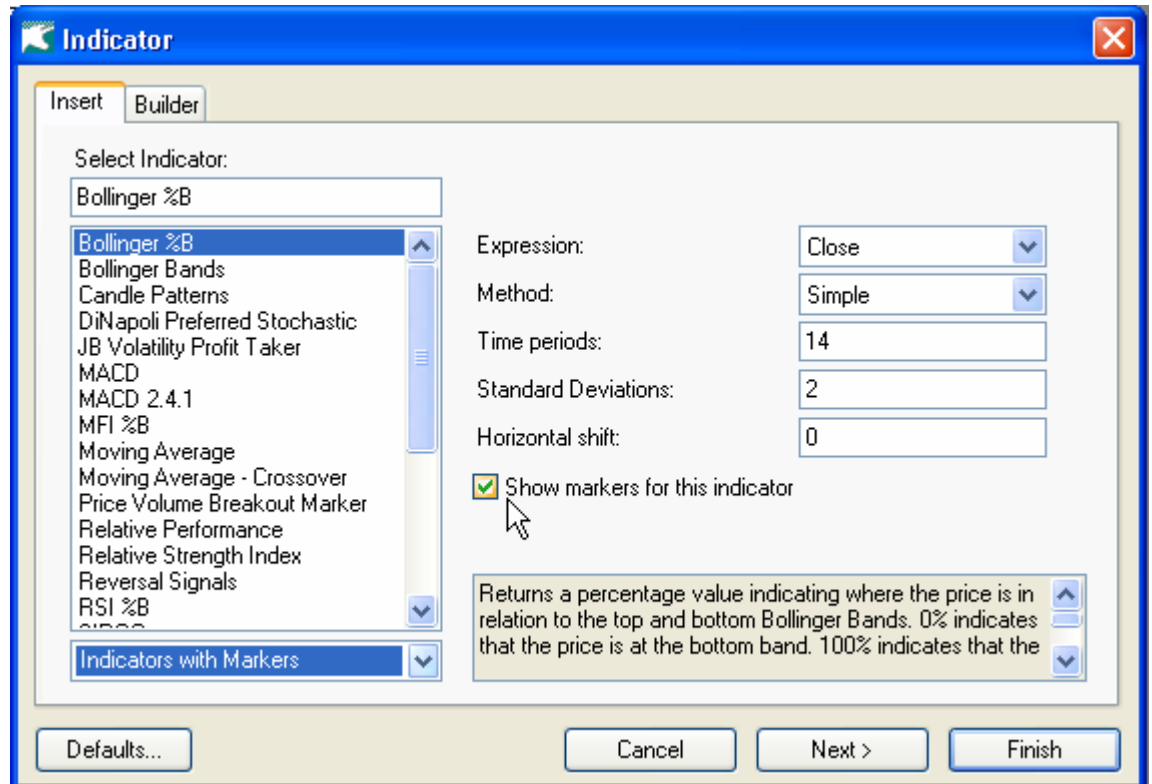


Select the Styles Tab. Now you have a choice to hide various plots such as the markers or even the indicator itself. In this case, Above and Below are the markers. Click in the selection box to remove the tick and to hide marker. To make the marker visible again, simply tick the box.



• Trade your own way •

You are also able to show or hide the markers at the time when you insert the indicator. On the properties page, click on the check box to hide the markers for the indicator.



• Trade your own way •